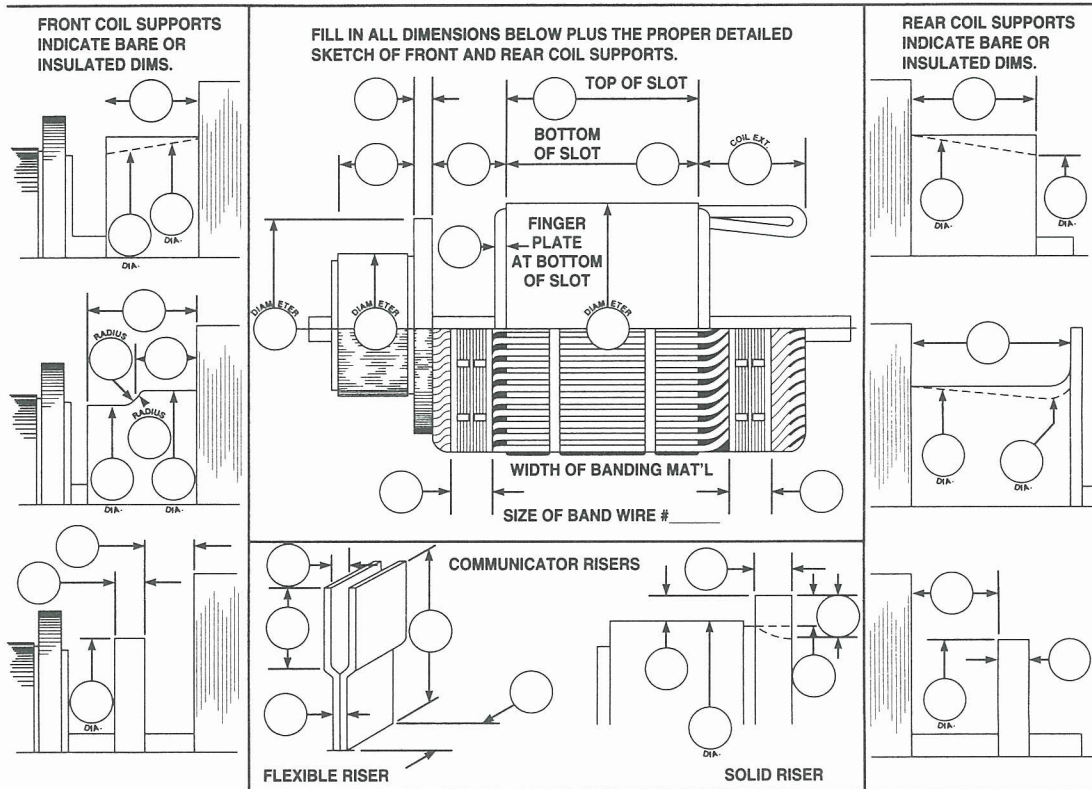




WITH SOUTHERN ELECTRIC COIL, THE POWER IS IN YOUR HANDS!

ARMATURE CORE & WINDING DATA

STYLE NO.	S. O. NO.		MACHINE	MAKE	
MFGR'S. SPEC. NO.	SERIAL NO.		TYPE	FRAME	FORM
% LOAD	HRS.	DEG. C.	KW	R.P.M.	VOLTS
100% LOAD	HRS.	DEG. C.	PHASE	CYCLES	AMPS.



NUMBER OF ARMATURE SLOTS
 NUMBER OF COMMUNICATOR BARS
 NUMBER OF TAP COILS (A.C. & Equalizer)
 NUMBER OF EQUALIZER COILS

SLOT THROW 1 AND BAND GROOVES
 EQUALIZER THROW 1 AND VENT DUCTS

DEPTH UNDER BAND DEPTH UNDER WEDGE

INDICATE ALL SLOT WIDTHS IN THOUSANDTHS OF AN INCH.
INDICATE TOTAL DEPTH AND DEPTH UNDER WEDGE OR BAND IN HUNDREDTHS.

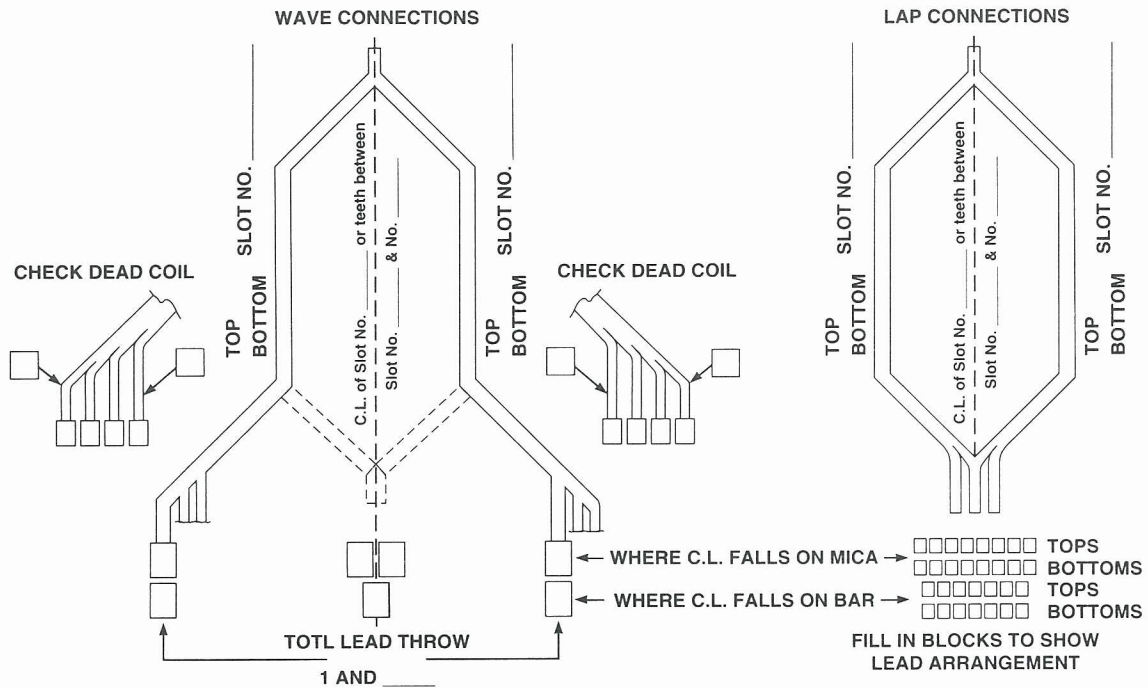
TO ASSURE CORRECT LEAD THROW GIVE ACCURATE COMMUTATOR CONNECTIONS ON REVERSE SIDE.

Questions? Need Assistance? Call our skilled and friendly experts!

Southern Electric Coil, Inc.

5025 Columbia Avenue Hammond, IN 46320
 Tel: (800) 348-6560 Fax: (219) 937-1387
 email: service@southernelectriccoil.com

COMMUTATOR CONNECTIONS

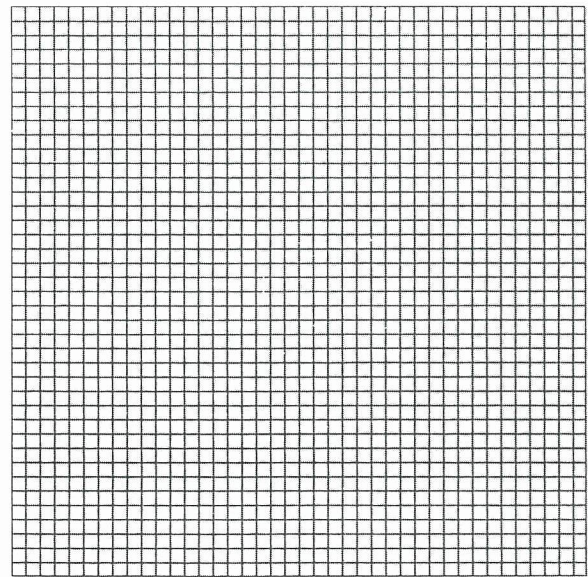
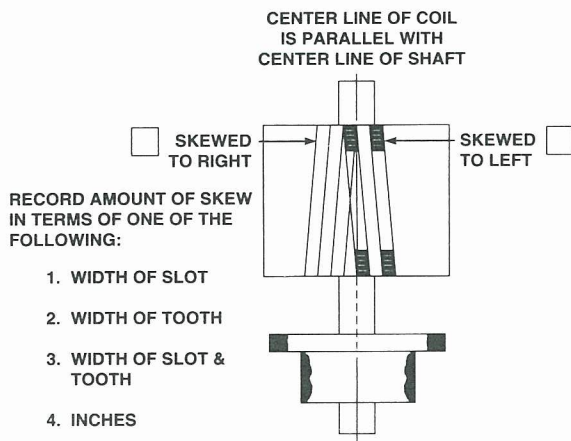


WIRE SIZE: _____ WIRES IN HAND _____ TURNS/COIL _____

DEAD LEAD CONNECTIONS

Where dead lead coil is present, give connections of the dead lead coil bundle, indicating above which lead is dead. Where sample coils are submitted, the dead lead bundle is preferred.

SKewed SLOTS



DATA FROM _____ COMPANY _____ BY _____ INDIVIDUAL _____ DATE _____